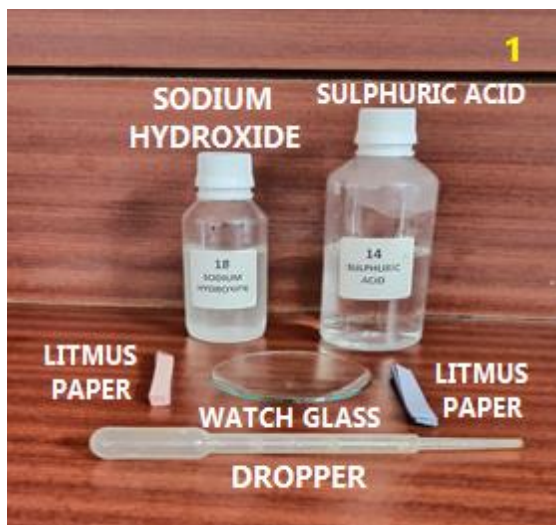
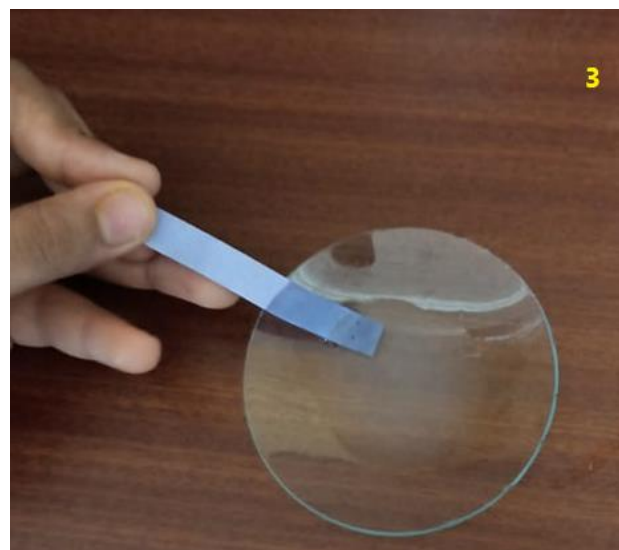


# LITMUS INDICATOR -2



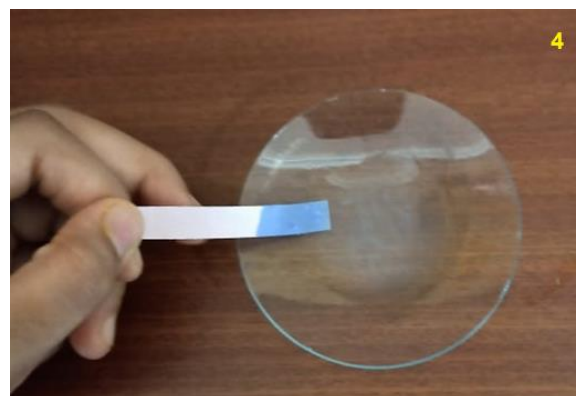
**MATERIAL REQUIRED**



**PUT BLUE LITMUS PAPER ON THE WATCH GLASS, NO CHANGE IN COLOUR OF LITMUS PAPER**



**POUR SOME SULPHURIC ACID IN THE WATCH GLASS**

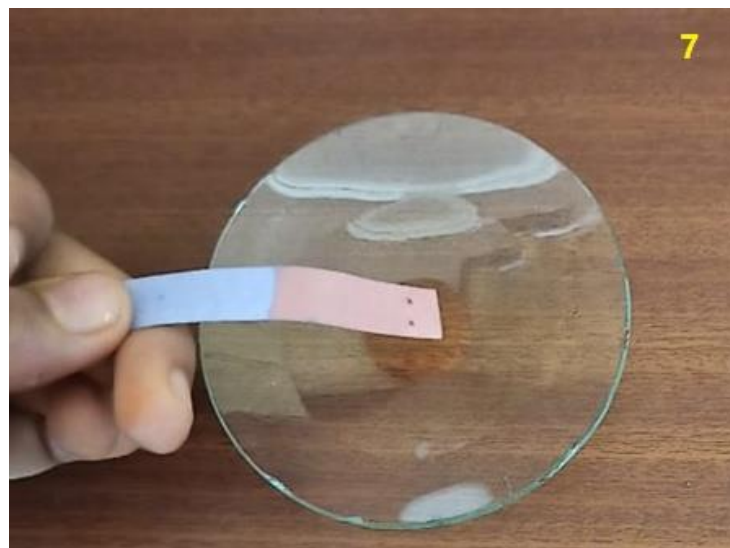


**PUT RED LITMUS ON THE WATCH GLASS, COLOUR OF LITMUS PAPER CHANGES FROM RED TO BLUE**

**ARSHA SARAF'S LAB**



**NOW POUR SOME SODIUM HYDROXIDE  
IN ANOTHER WATCHGLASS**



**PUT BLUE LITMUS PAPER ON THE  
WATCHGLASS THE COLOUR OF LITMUS  
PAPER CHANGES FROM BLUE TO RED**



**PUT RED LITMUS PAPER ON THE  
WATCH GLASS, NO CHANGE IN COLOUR  
OF LITMUS PAPER**

**ARSHA SARAF'S LAB**

**Litmus paper acts as universal indicator to test acid and bases. In acid, blue litmus turns red. In bases, red litmus turns blue.**